

GARYCOOPERPAVING

Norfolk's Leading Paving Company



Driveways | Patios | Pathways | Disabled Access

www.garycooperpaving.co.uk





Welcome

At Gary Cooper Paving we help homeowners create their dream driveway, patio and/or disabled access.

At the heart of what we deliver is great customer satisfaction and at Gary Cooper Paving we pride ourselves on delivering a personal service to all our customers.

Why choose us

By choosing Gary Cooper Paving you're putting your project in the right hands. With over 30 years experience we like to think we know a thing or two about paving!

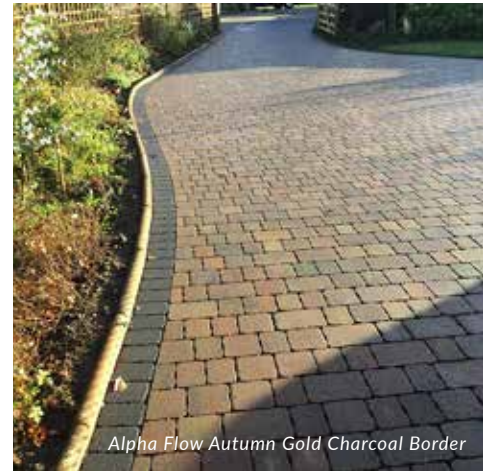
Our reputation as Norfolk's leading paving company has been earned through providing high standards, friendly service and approachable, caring staff.

Great customer service

We are constantly being recommended and are delighted to say that most of our business comes from word of mouth recommendations.



Creating outdoor living spaces since 1988



Conventional Driveways

Driveways can dramatically enhance the appearance of your property and at Gary Cooper Paving we build driveways to last. Whether you're considering a conventional or permeable driveway we have the expert knowledge to ensure your site is thoroughly prepared to withstand every day use, whilst ensuring the correct drainage is installed to eliminate standing water.

Understanding the legal requirements

It's legal requirement to incorporate Sustainable Drainage Systems (SuDS) into any front garden or driveway over 5 m² that is being paved over – even if you are only replacing an existing driveway. This is designed to prevent any surface water run-off to the highway. This requirement was introduced to help reduce the risk of future flooding and build up a more sustainable infrastructure.





Permeable Driveways

Permeable paving has proven to be a highly effective way of minimizing surface water run-off whilst giving you all the aesthetic options you need to create a beautiful driveway. This has been our most popular choice in recent years for those looking for longevity and suitability in our changing climate.

Key Benefits

Permeable paving allows water to seep through it, using natural filtration, whereas other types of paving, such as conventional, allows the water to run off into a soakaway or drainage channel. On large areas it is hard to prevent puddles unless you use permeable paving, which promotes natural drainage.

The 80/20 rule

The biggest cost elements of your project will be the installation and sub-base materials. This is generally fixed irrespective of the type of paving you choose.

Product - 20%

Selecting the product you really want might only make a small difference to the overall cost of your project.

Sub-Base & Install - 80%

This is the cost you don't see but is so vital for structural integrity and longevity.

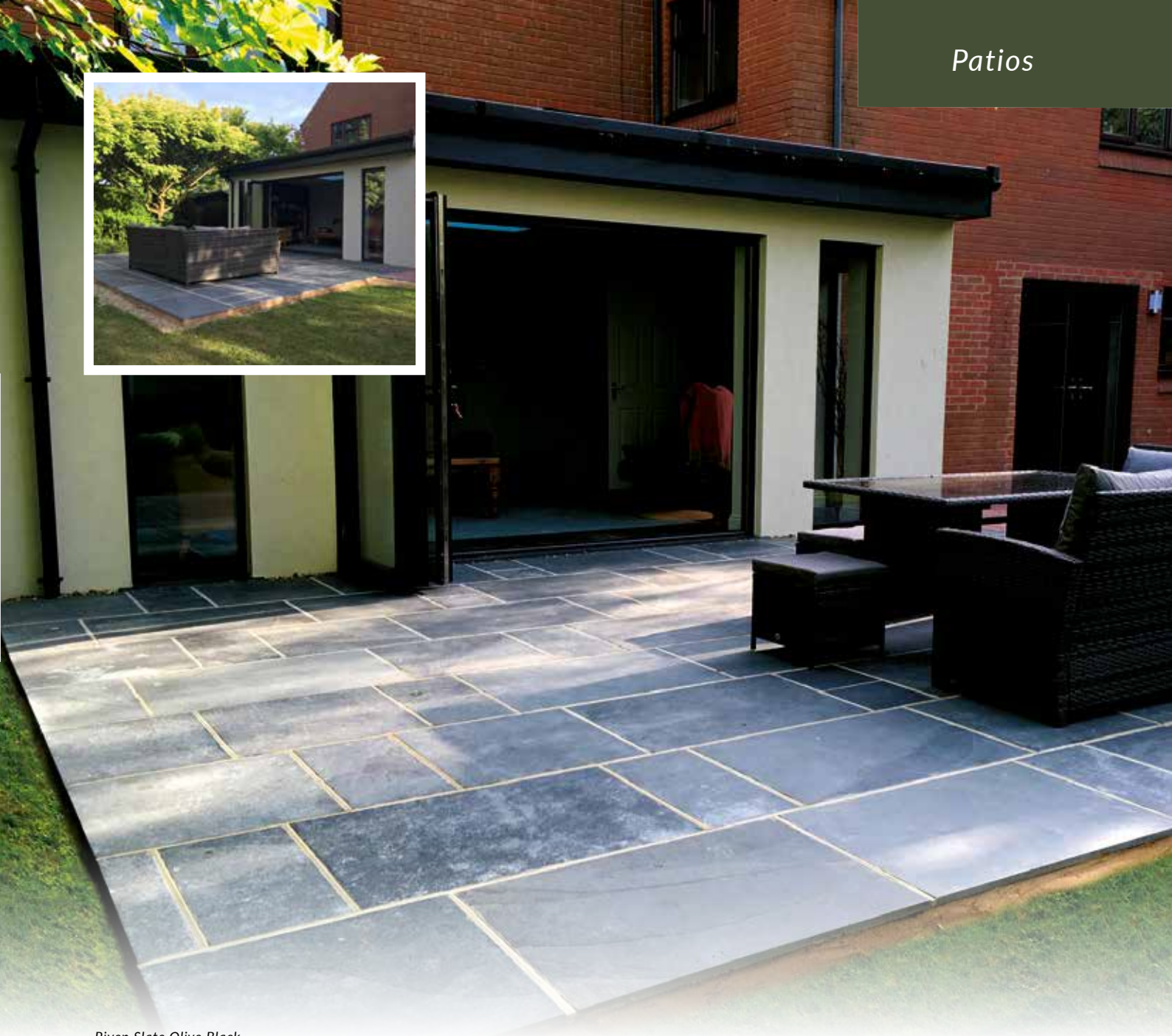
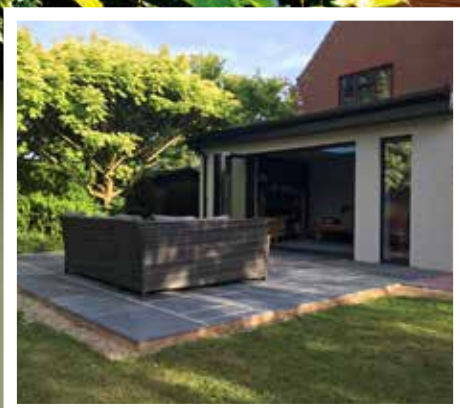


Beautiful and Functional

Patios are a must have when it comes to family time and social gatherings. We have been creating beautiful and functional patios for over 30 years.

Our experienced team love to work on all types and sizes of patios, whether it be the latest new porcelain stone, flamed sandstone, traditional limestone, granite, the choices are endless.





Riven Slate Olive Black

4 easy steps to creating the perfect patio

STEP 1



Get Inspired.

Take a look at our brochure and website, to build an idea of what you like.

STEP 2



Talk to us.

We will help you transform those ideas into the perfect design.

STEP 3



Decide on a product.

Browse through our product brochures with us and together we will find the best product for your space.

STEP 4

Just sit back and relax.

Relax in the knowledge that you've made the right choice.

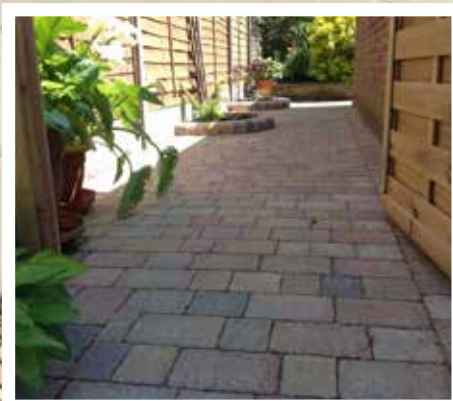
Pathways, Steps & Retaining Walls

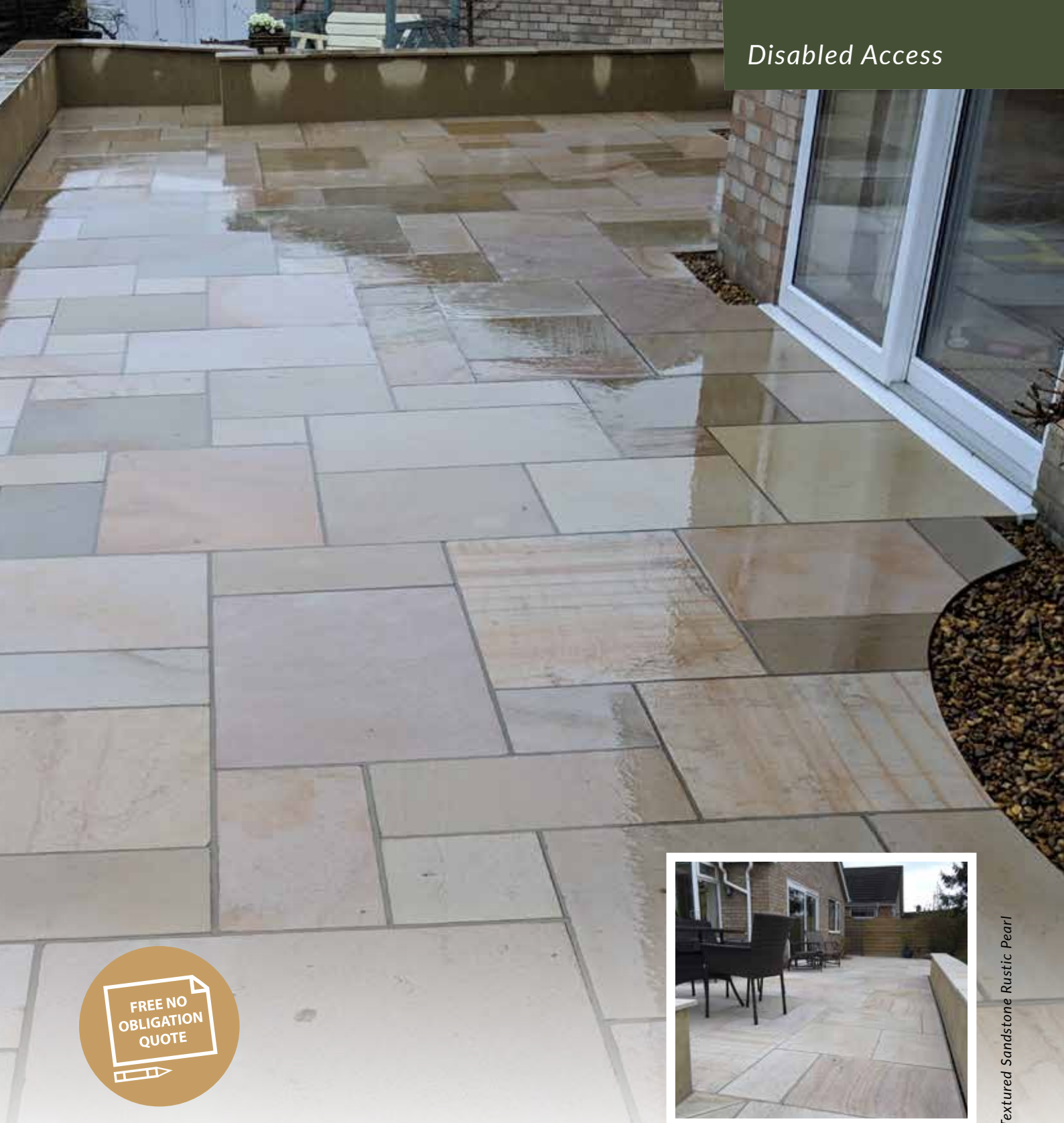


Charcoal High Kerbs Bullnose

At Gary Cooper Paving we provide a complete range of landscaping services including pathways, steps, retaining walls and fences.

Attention to detail is everything, which is why we pride ourselves on delivering a harmonious ready to use space with as little upheaval for a customer as possible.





Textured Sandstone Rustic Pearl

FREE NO
OBLIGATION
QUOTE

Special Projects

Everyone should have the opportunity to create something magical in their garden and at Gary Cooper Paving we specialise in delivering solutions when greater access is required. For example, we can provide attractive and safe ramps and slopes for people who have difficulty with conventional steps and paths.



Transformations

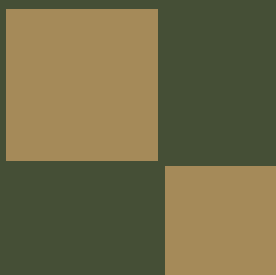
A new driveway or patio can transform your property. Your home will look more attractive and its value will be increased. Even the smallest gardens can look wonderful with a little imagination and the right skills.

We work with you to understand your wishes, helping you to choose materials and designs that compliment your property.





*Our business is
built on great
customer service.*



GARYCOOPERPAVING

Norfolk's Leading Paving Company

Driveways | Patios | Pathways | Disabled Access

Strayground Lane, Wymondham, Norfolk NR18 9NA

NORWICH
01603 415425

DISS
01379 644459

FAKENHAM
01328 853885

N WALSHAM
01692 500955

LOWESTOFT
01502 563383

WYMONDHAM
01953 607289

www.garycooperspaving.co.uk